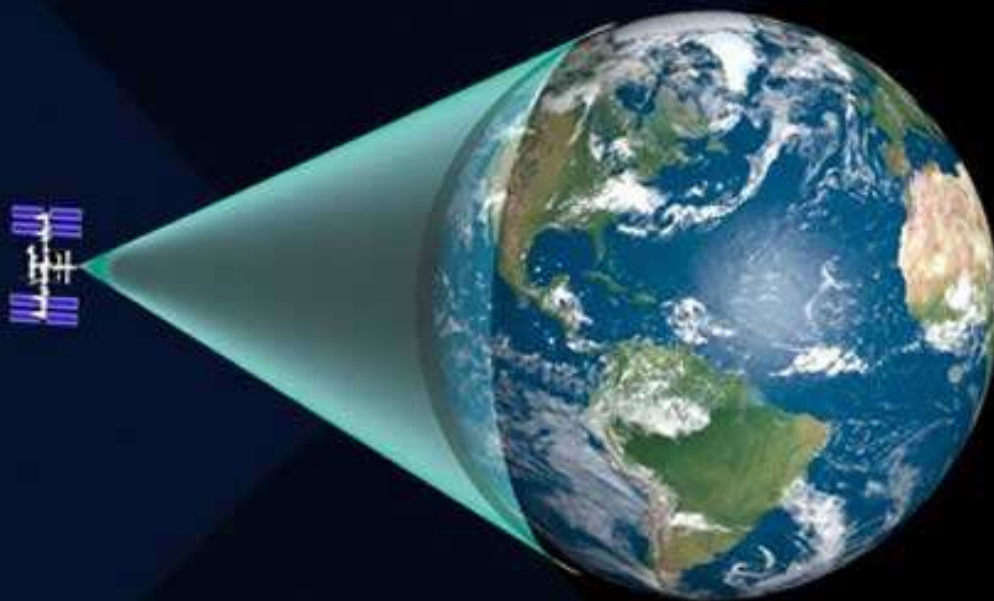




**ADMISSIONS
OPEN
2020-21**

GEOINFORMATIC TECHNOLOGIES



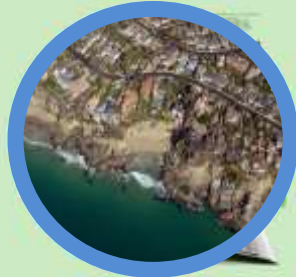
Geoinformatics

**DEPARTMENT OF GEOGRAPHY
RAGHUNATH GIRLS' POST GRADUATE COLLEGE, MEERUT
deep.geography.rg@gmail.com / Contact No.- 9319311533**

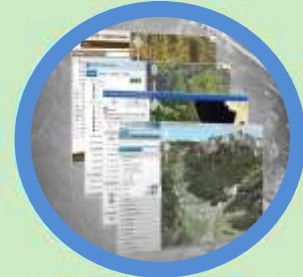
GEOINFORMATIC TECHNOLOGIES



Remote Sensing



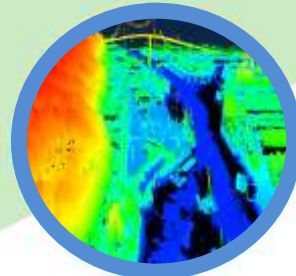
Photogrammetry



GIS/ Web GIS



GPS/ Survey



LiDAR

SEVERAL APPLICATIONS:



OPPORTUNITIES FOR CANDIDATES IN THE FOLLOWING FIELDS:

GEOGRAPHY, GEOLOGY, ENVIRONMENTAL SCIENCE, DISASTER MANAGEMENT, ARCHAEOLOGY, PLANNING AND ARCHITECTURE, ENGINEERS, BSc, MSc, MANAGEMENT STUDIES – MBA, SURVEYING

COURSES WE OFFER

- Post Graduate Diploma In GeoInformatics. (One year)
- Six Months Diploma In GIS & Remote Sensing
- Three Months Certificate Course in GIS.
- Three Months Certificate Course In LiDAR.
- Three Months Certificate Course In Digital Photogrammetry.
- Three Months Certificate Course in Remote Sensing

ELIGIBILITY CRITERIA

Geography, Geology, Disaster Management, Environmental Science, IT, Computer Science, Agriculture, Civil, Planning & Architecture, and Engineering Graduate Final Year students awaiting results may also apply.

- Candidates seeking admission in to any of the courses will be selected on the basis of merit/Entrance.
- Initially the student is granted only provisional admission which is confirmed after the receipt of valid
- Transfer Certificate /Migration Certificate and on completion of other relevant admission formalities.
- Application Form & Prospectus can be obtained from College office by paying prescribed fee by Cash.

Hostel

The College has got separate hostel for Girls have Single & double occupancy rooms with requisite furniture. The hostel has a guest room, garden, playground, telephone, indoor games and sports and recreational facilities and gym. The Internet Connectivity is also available in the hostel.



Training & Placement Cell

College believes in providing an environment that stimulates and develops the abilities of each individual student, to the best of their potential. It supports the students to hone multi-dimensional skills and to make them ready to face the hard realities of the contemporary world. Training and placement cell of Raghunath Girls' Post Graduate College is meticulously working in this direction with untiring zeal. The Cell is assisting the students in the following four ways:

- Providing assistance to analyse their potential.
- Providing information about opportunities for training and placements.
- Interacting with corporate houses for campus placements.
- Providing career counselling and helping students in shaping their personalities.
- Training and Placement Cell is also acting as a facilitator in building up a resource base through specific research, related to industry.

WHY CHOOSE THESE COURSES?

- Learn about the True Business Value of Integrated Geospatial Solutions
- Need to Communicate the VALUE of Geospatial and don't know where to start? if so join us to understand YOUR as is and To Be roadmap for Geospatial and Geomatics development.
- Define your workflows and processes to enable a whole life Information Management.
- (IM) approach to Geospatial and Geoinformatics Information.
- Learn how to align YOUR VISION with the real needs of your organization.
- Kick start your Digital Transformation Journey with us.
- Live Project Training / Internship In Reputed Organisations.

100% Job Assistance

DEPARTMENT OF GEOGRAPHY

RAGHUNATH GIRLS' POST GRADUATE COLLEGE, MEERUT

Technology Partner- NIGMT Foundation, Dwarka, New Delhi

deep.geography.rg@gmail.com / Contact No.- 9319311533